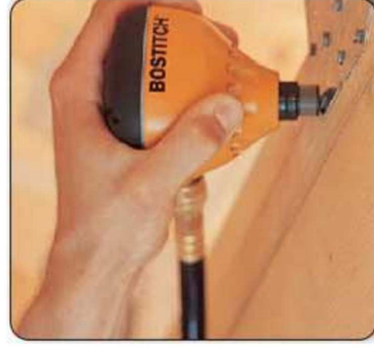


# BOSTITCH®

## PN100K

INDUSTRIAL HIGH SPEED IMPACT NAILER



*This kit is perfect for driving nails in tight spaces, such as between floor joists.*

TOOL PARTS ILLUSTRATION

**⚠WARNING:**

**BEFORE PERFORMING REPAIRS ON THIS TOOL, ALL OPERATORS SHOULD STUDY THIS ILLUSTRATION, AS WELL AS THE PARTS LIST AND OPERATION AND MAINTENANCE MANUAL. OPERATORS SHOULD UNDERSTAND AND FOLLOW ALL SAFETY WARNINGS AND INSTRUCTIONS. KEEP THIS ILLUSTRATION WITH THE TOOL FOR FUTURE REFERENCE. IF YOU HAVE ANY QUESTIONS, CONTACT YOUR BOSTITCH REPRESENTATIVE OR DISTRIBUTOR.**

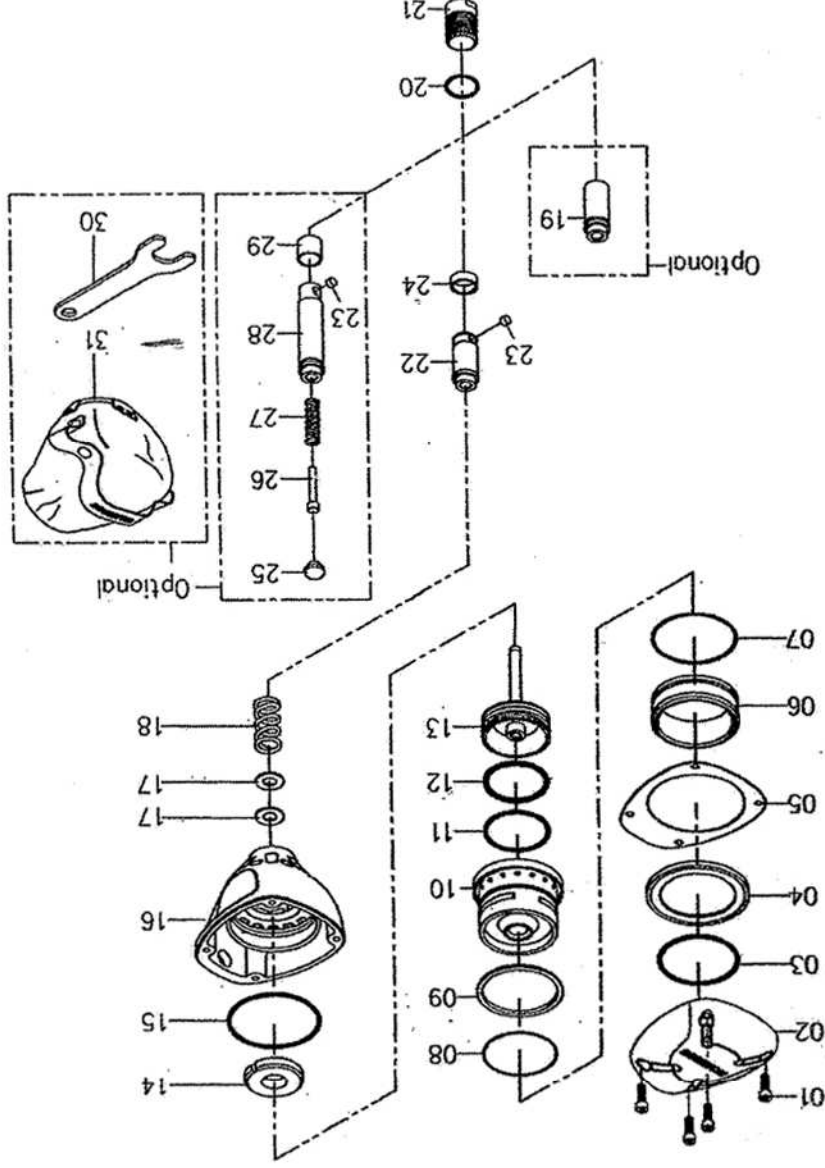
IP1138-1 REVD 04/04

# BOSTITCH®

Stanley Fastening Systems

# BOSTITCH PPN100K

IP1138-1 REVD 04/04  
TO BE USED WITH IP1138-2 AND 120914 OPERATION AND MAINTENANCE MANUAL



| Item No | Part No.    | Description                          |
|---------|-------------|--------------------------------------|
| 1       | S0110518100 | SCREW                                |
| 2       | P2020000140 | CAP                                  |
| 3       | S06A013800  | O-RING                               |
| 4       | P2040000300 | VALVE SEAT                           |
| 5       | P2020000300 | GASKET                               |
| 6       | P2042000500 | ASSEMBLY,CYLINDER                    |
| 7       | S06Z003200  | O-RING                               |
| 8       | S06Z002700  | O-RING                               |
| 9       | P2040000800 | BUMPER,VALVE                         |
| 10      | P2042000700 | VALVE                                |
| 11      | S06A013100  | O-RING                               |
| 12      | S06A022300  | O-RING                               |
| 13      | G0201600    | ASSEMBLY,DRIVER/PISTON               |
| 14      | P2040001300 | BUMPER                               |
| 15      | S06A014300  | SEAL                                 |
| 16      | P2020000232 | FRAME                                |
| 17      | P2045203762 | WASHER                               |
| 18      | P2045201762 | SPRING                               |
| 19      | P2045201962 | NOSE (L) UNIT ( for large nail head) |
| 20      | S06S002000  | SEAL                                 |
| 21      | P2045201862 | GUIDE                                |
| 22      | G3200200    | NOSE (M) UNIT (standard)             |
| 23      | P2040003100 | MAGNET                               |
| 24      | P2040002900 | RETAINER,MAGNET                      |
| 25      | P2040003003 | PLUG SAFETY                          |
| 26      | P2045701200 | DRIVER (C)                           |
| 27      | P2045202762 | SPRING                               |
| 28      | G3200300    | NOSE (S) UNIT (for small nail head)  |
| 29      | P2040002800 | MAGNET STOPPER (S)                   |
| 30      | P2026300465 | WRENCH                               |
| 31      | P2020000500 | GRIP,LEATHER                         |

PPN100K Parts List : IP1138-2REV B 04/04  
To be used with tool parts illustration: IP1138-1REV D 04/04  
and operation and maintenance manual: 120914  
Serial Number on the Tool : PN100 0237 000 and Hinger